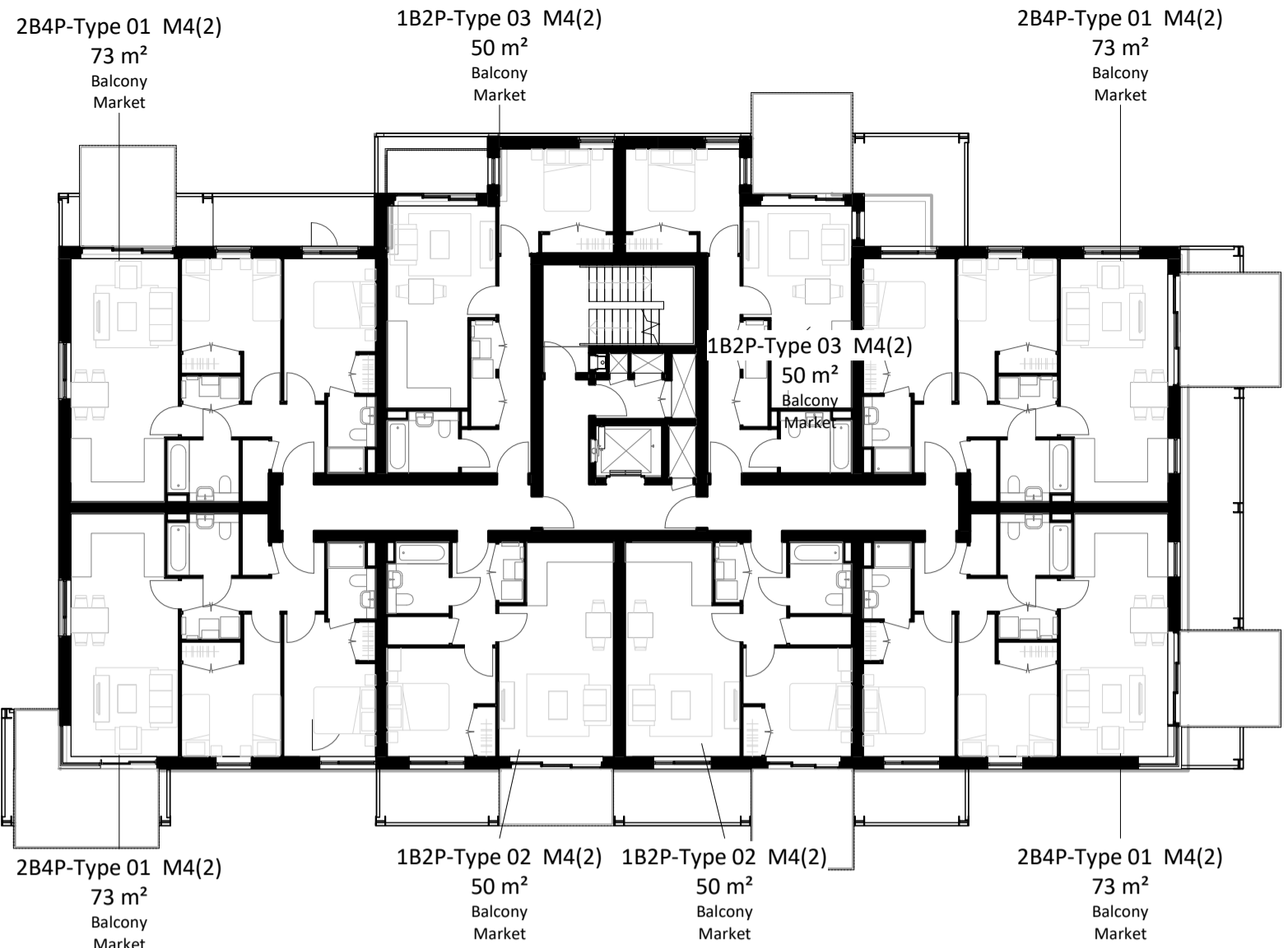
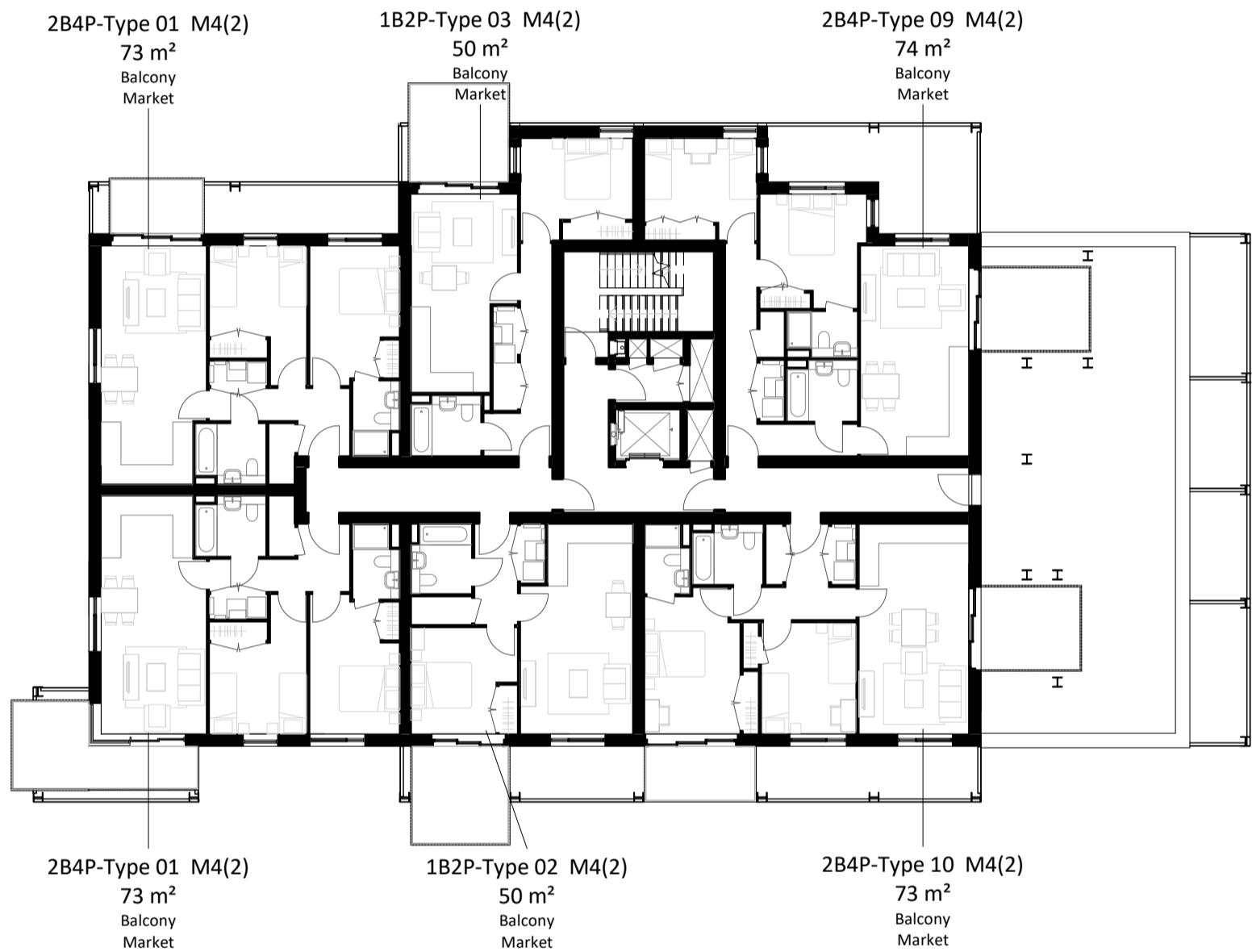




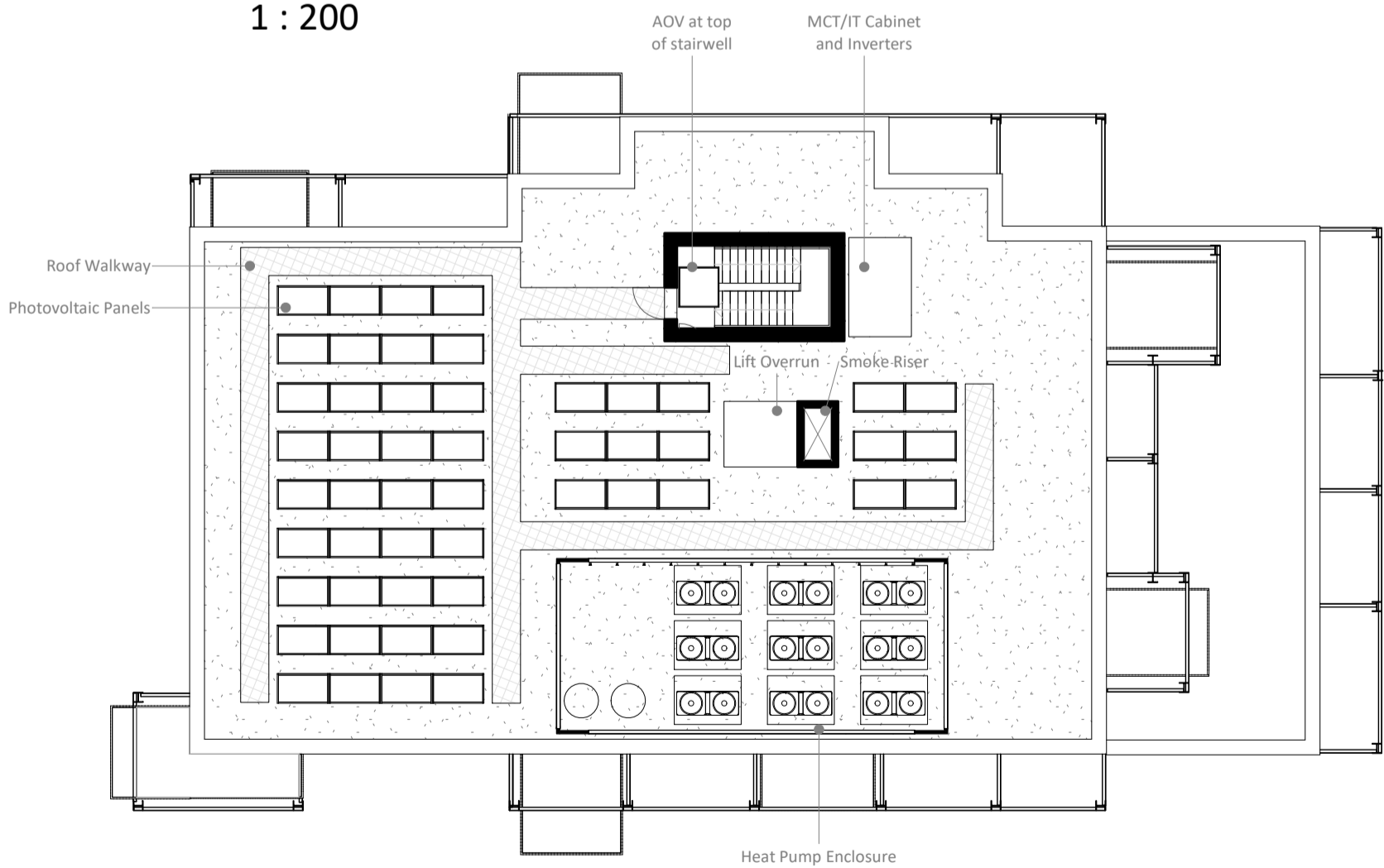
1 Building 12 - Ground Floor Plan  
1 : 200



2 Building 12 - First to Third Floor Plan  
1 : 200

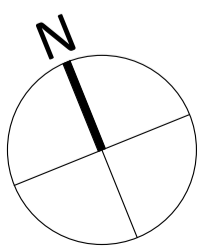


3 Building 12 - Fourth Floor Plan  
1 : 200



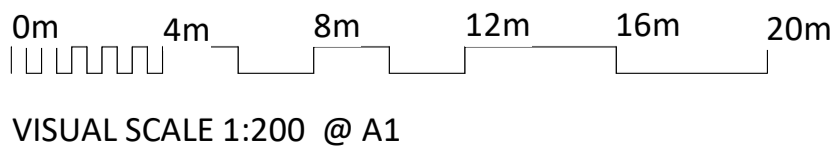
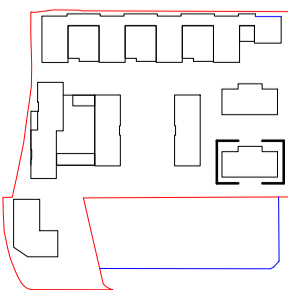
4 Building 12 - Roof Plan  
1 : 200

NOTES  
CONSULTANTS  
- Refer to highways consultant's drawings for details  
- Refer to landscape consultant's drawings for details  
- Landscaping layout is indicative only  
AREAS  
- Refer to area schedule



Rev	Notes	Date	By	Auth
P1	DRAFT Planning Issue	19-08-30	CS	FvB
P2	Issue for Planning	19-09-05	CS	FvB
P3	Planning amendment	19-09-24	CS	FvB
P4	Update for GLA Application	20-04-07	OT	JBC
P5	GLA Agreed Changes	20-07-23	CS	MG
P6	substitutions	20-07-24	CS	MG

KEY PLAN



VISUAL SCALE 1:200 @ A1

LEGEND: FIRE SECURITY

- Sterile ventilated staircase lobby
- AOV / Smoke shaft (min. 1.5m² section)
- Firefighting lift
- Mechanical smoke extraction duct (min. 0.6m² section)
- Natural air inlet duct

ColladoCollinsArchitects

17-19 Foley Street  
London W1W 6DW  
T 020 7580 3490  
F 020 7580 2917  
info@colladocollins.com  
www.colladocollins.com

Date: 09/02/19  
Drawn By: CS  
Checked by: JBC  
Scale @ A1: As indicated  
Scale @ A3: 1 : 400  
CAD File No:

Inland Homes  
Hillingdon  
Building 12 - Floor Plans

PLANNING  
19011

P1(12)-100

P6  
Revision